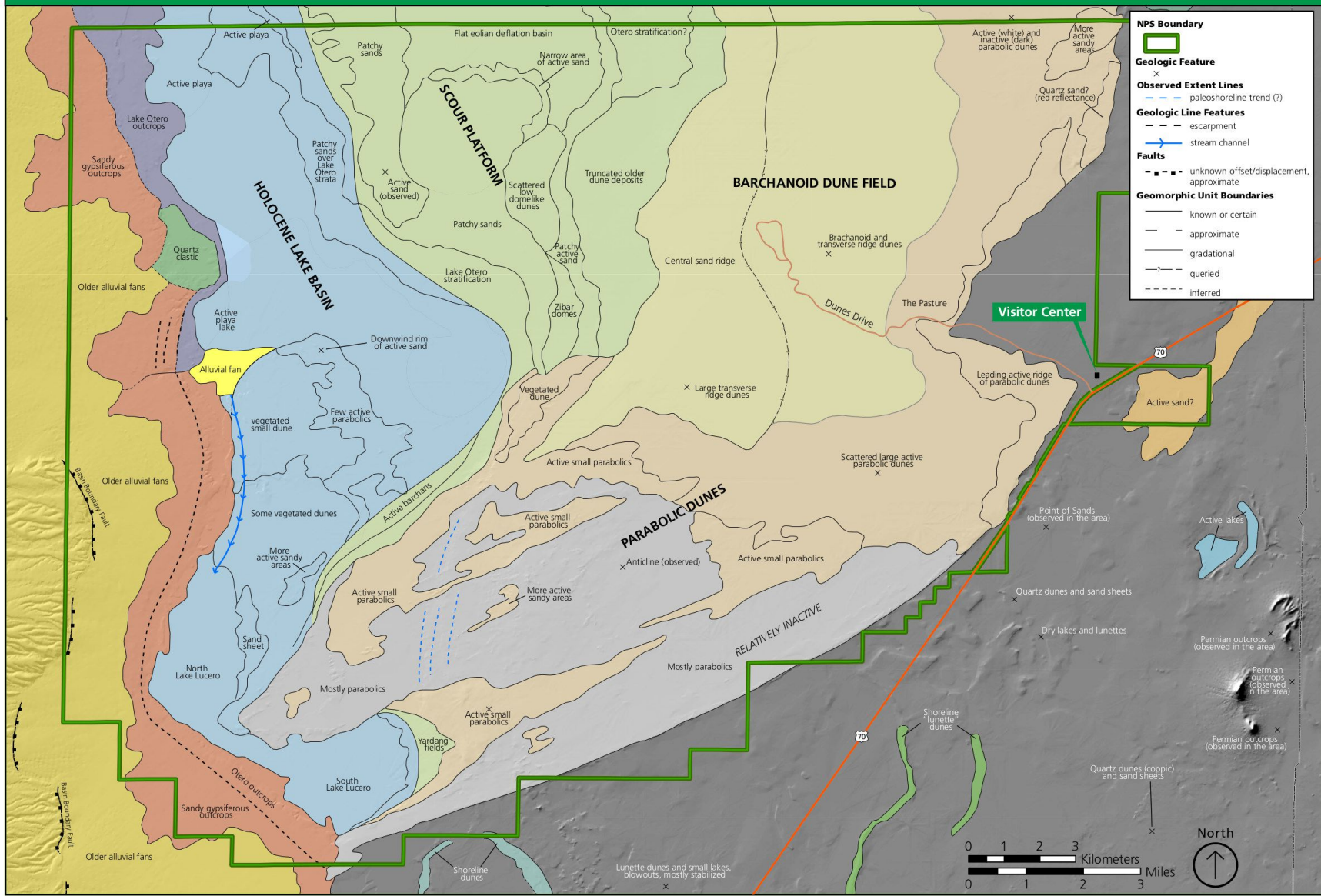
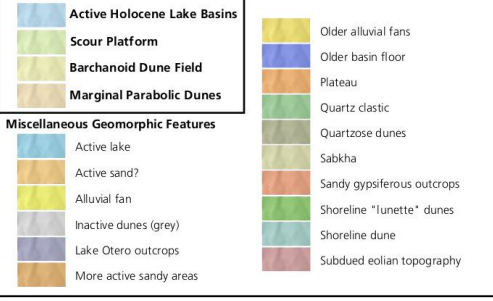
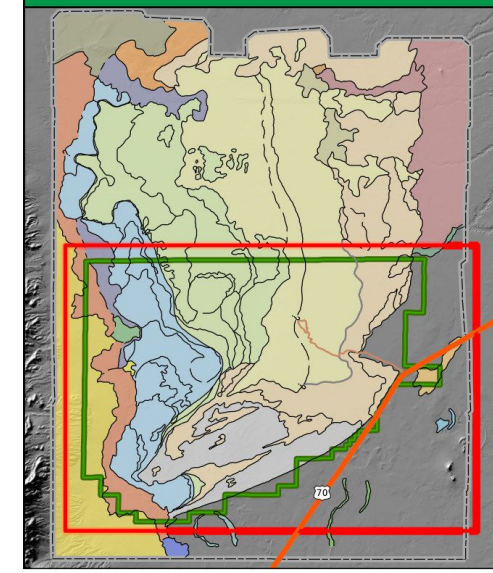


Area of Detail



Full Extent of Digital Geomorphic Data, Area of Detail in Red



These figures are an overview of compiled digital geologic and geomorphic data. It is not a substitute for site-specific investigations.

Minor inaccuracies may exist regarding the location of geologic features relative to other geologic or geographic features on the figure. Based on the source map scale (1:50,000) and U.S. National Map Accuracy Standards, geologic features represented here are within 25 meters/83 feet (horizontally) of their true location.

This figure was prepared as part of the NPS Geologic Resources Division's Geologic Resources Inventory. The source map used in creation of the digital geologic data product was:

Fryberger, S.G. 2001b. Reconnaissance Geomorphic Map of the White Sands Dune Field, New Mexico (scale 1:50,000). Figure 2-17A, in Geological Overview of White Sands National Monument, Chapter 2: Quaternary Geology.

Digital geologic data and cross sections for the monument, and all other digital geologic data prepared as part of the Geologic Resources Inventory, are available online at the NPS Integrated Resource Management Applications Portal (IRMA): <https://irma.nps.gov/App/Reference/Search>. (Enter "GRI" as the search text and select WHSA from the unit list.)

UTM NAD83 ZONE 13N